



# Andrew Bowerbank B.Ed., OTC, D.Ind, LEED ap, CCEP

- **Executive Director,  
Canada Green Building Council -Greater Toronto Chapter**
- **Manager of Sustainable Development,  
Toronto & Region Conservation**

[abowerbank@trca.on.ca](mailto:abowerbank@trca.on.ca)

# Why Sustainable Development?





# *Moving Toward a Vision for*

The quality of life on Earth is being determined in rapidly expanding city regions. Our vision is for a new kind of community, The Living City, where human settlement can flourish forever as part of nature's beauty and diversity.

# *The Living City*



**Toronto and Region Conservation**

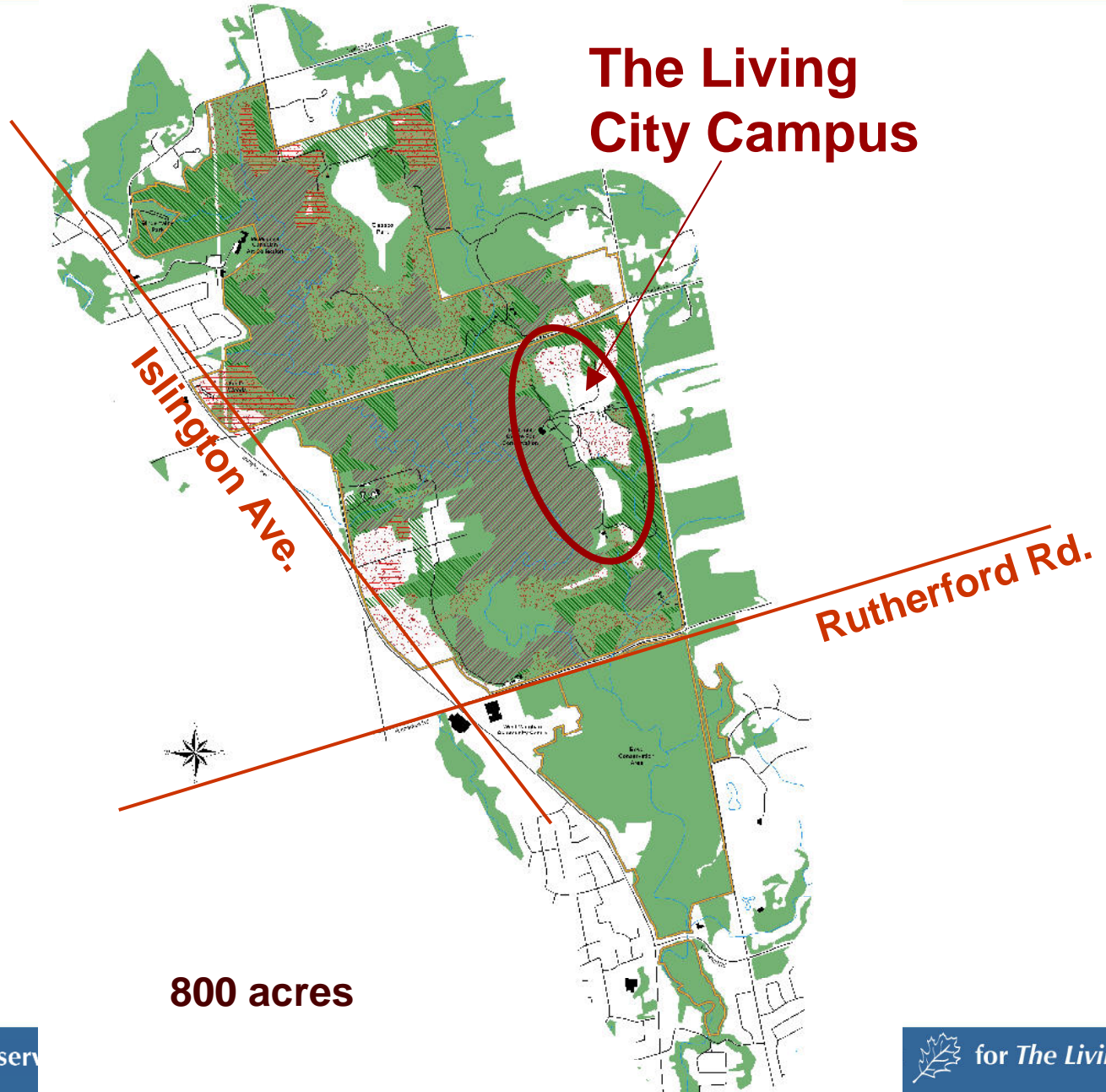
# **The Living City Campus**

**Leading the way -  
sustainable development,  
education and market transformation.**

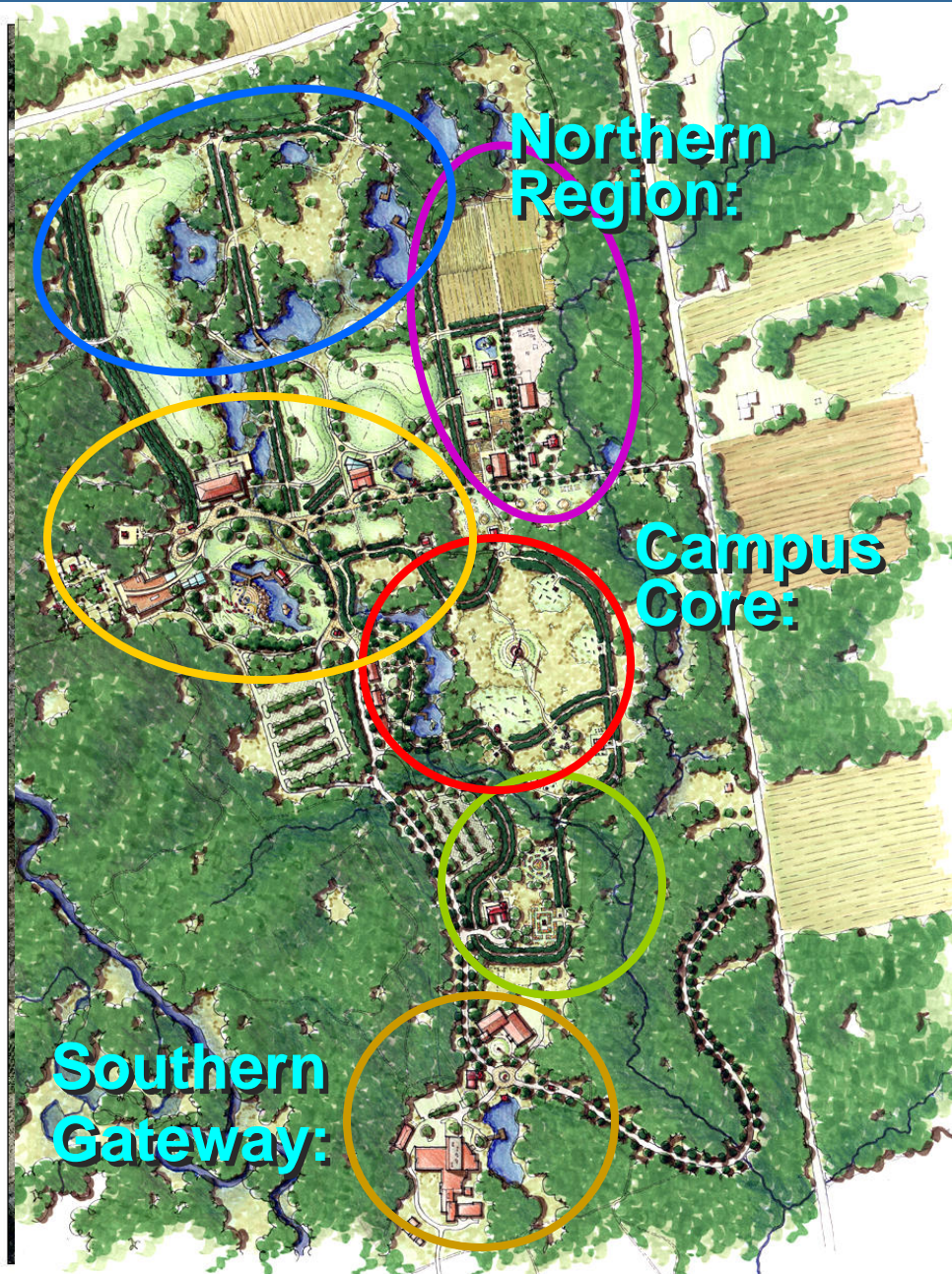
# The Living City Campus

## Location





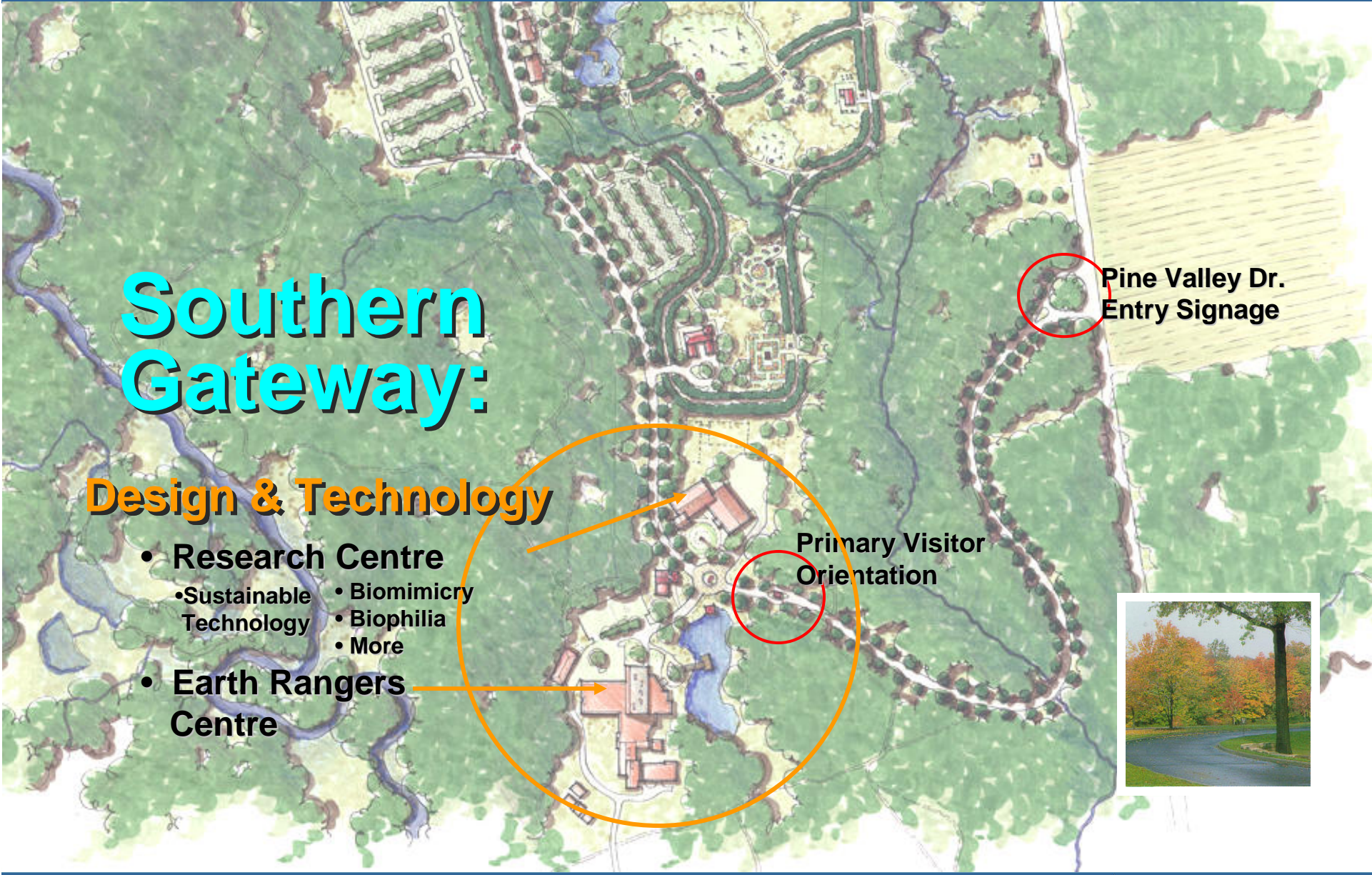
# The Emerging Vision



## Program Areas

- Nature Wetland
- Urban Agriculture/  
Bio Fuels
- Sustainable Living,  
Outreach &  
Education  
-public/professional  
programming &  
events
- Renewable Energy  
& Energy  
Conservation
- Biodiversity
- Core Research  
Design & Technology,  
Biomimicry

# The South Campus – Research & Biodiversity



## Southern Gateway:

### Design & Technology

- Research Centre
  - Sustainable Technology
  - Biomimicry
  - Biophilia
  - More
- Earth Rangers Centre

Primary Visitor Orientation

Pine Valley Dr. Entry Signage







- *Schad Foundation (Husky Injection Moldings)*
- *Green building –LEED gold certification*



## ***Sustainable Research, Science and Technology***





# The South Campus – Research & Biodiversity



## Southern Gateway:

### Design & Technology

- Research Centre
  - Sustainable Technology
  - Biomimicry
  - more
- Earth Rangers Centre

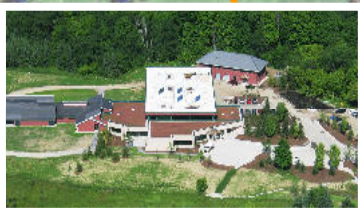
### Biodiversity Trail:

- Learning Centres
  - Raptors & Birds
  - Insects
  - Bats
  - more

Pine Valley Dr. Entry Signage



Primary Visitor Orientation



# South Campus – Research & Biodiversity

## *Biodiversity Trail and Biomimicry* *Demonstrates the Complexity of our Natural Ecology*

**Bees**



**Amphibians**



**Bat Cave**



**Insects**



**Butterfly and  
Hummingbird  
Gardens**



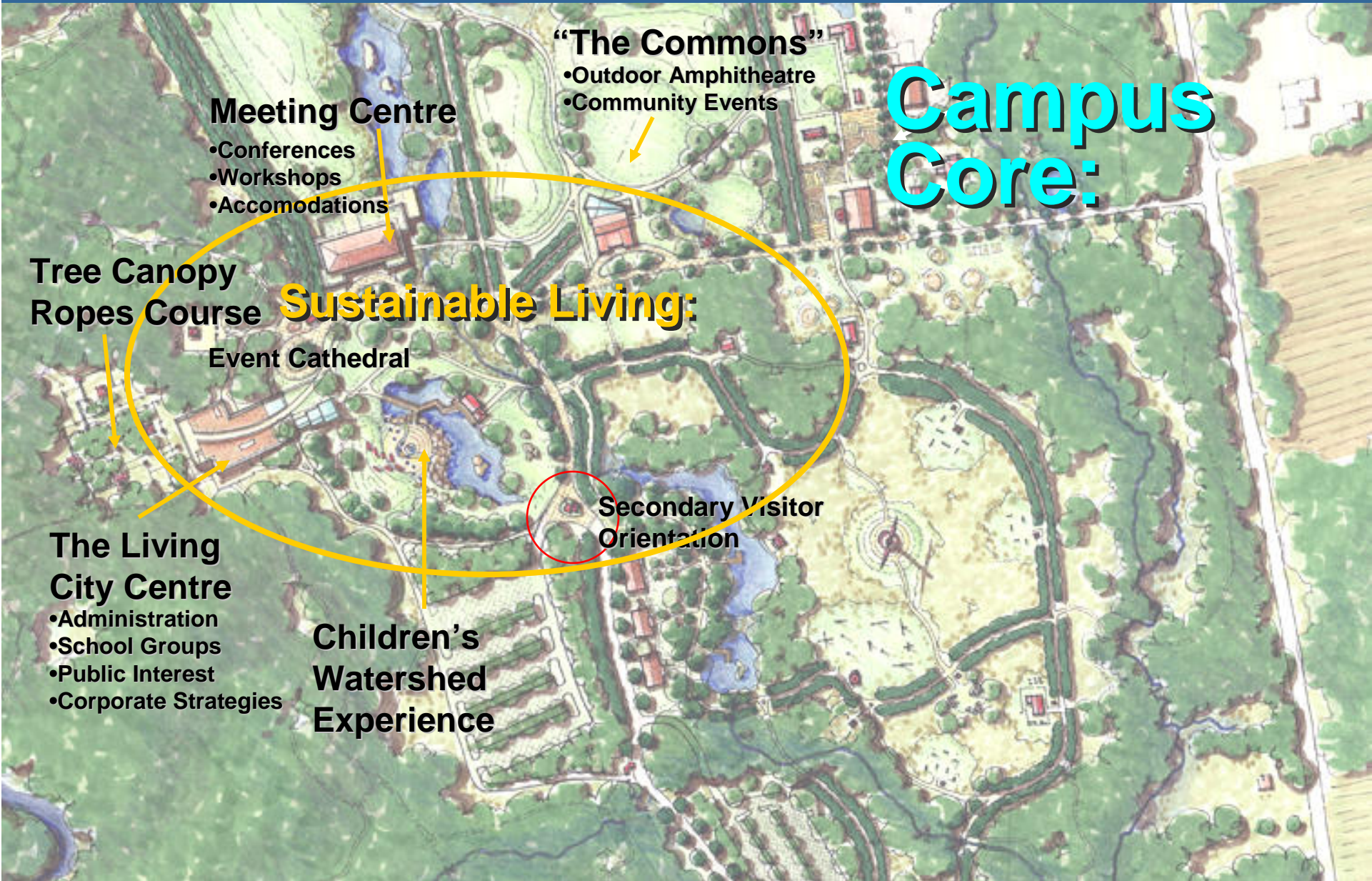
**Peregrine  
Centre**



# The South Campus – Research & Biodiversity



# The Central Campus - Sustainable Living & Energy Trail



# Central Campus – Sustainable Living & Energy Trail

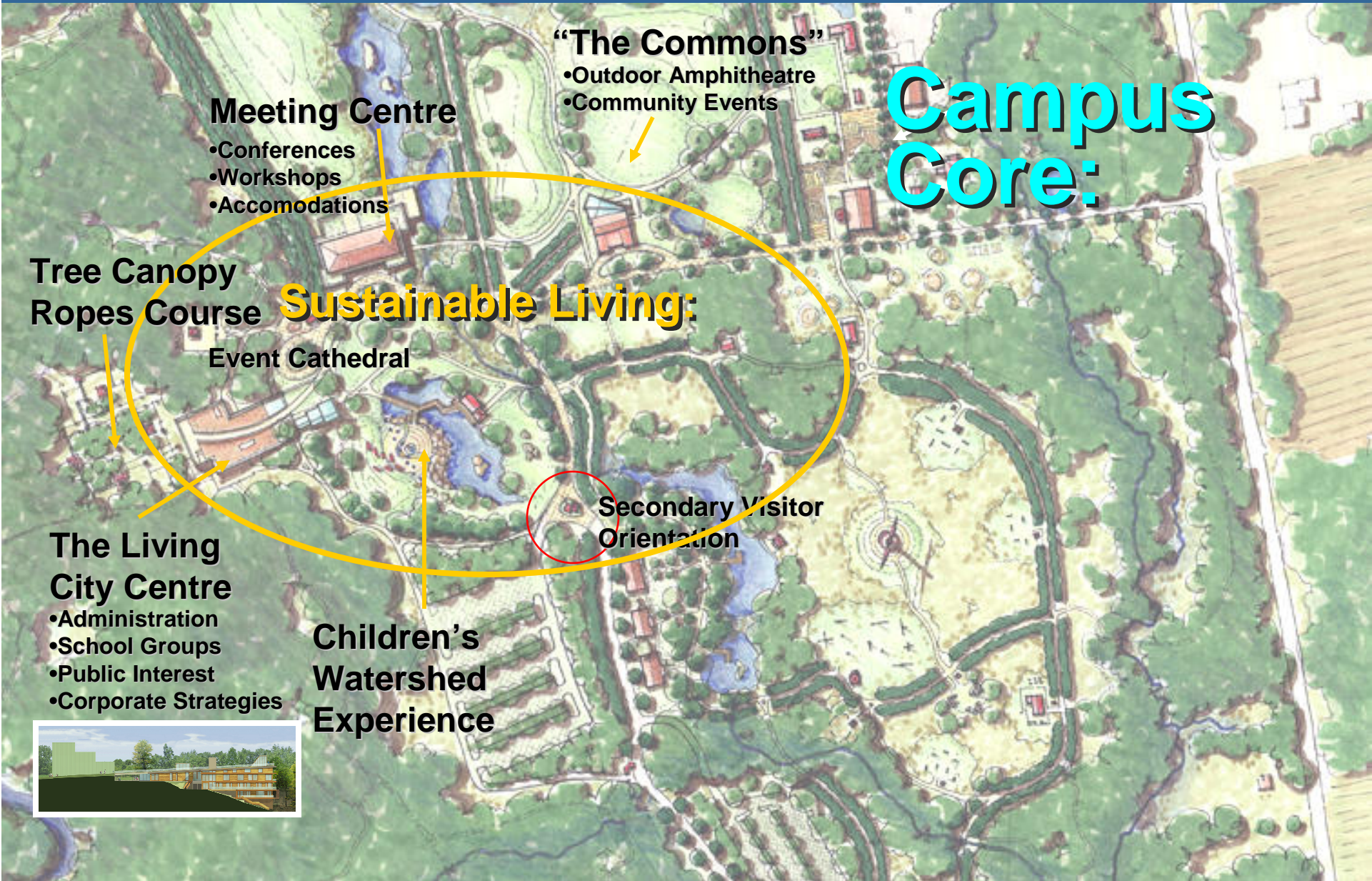
## *The Living City Centre*



## *Sustainable Education, Conference and Recreational Events*



# The Central Campus - Sustainable Living & Energy Trail



**Campus Core:**

**"The Commons"**  
•Outdoor Amphitheatre  
•Community Events

**Meeting Centre**  
•Conferences  
•Workshops  
•Accommodations

**Tree Canopy Ropes Course**

**Sustainable Living:**

**Event Cathedral**

**Secondary Visitor Orientation**

**The Living City Centre**

- Administration
- School Groups
- Public Interest
- Corporate Strategies

**Children's Watershed Experience**





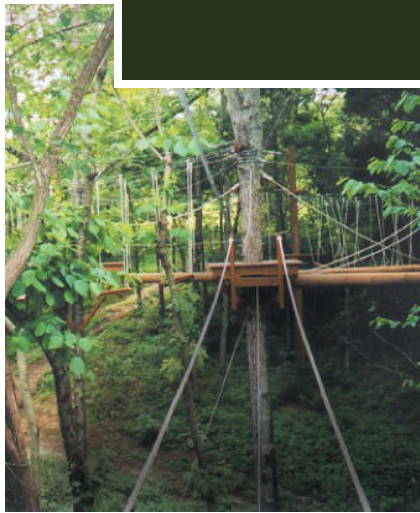
# Central Campus – Sustainable Living & Energy Trail

## Event Programs:

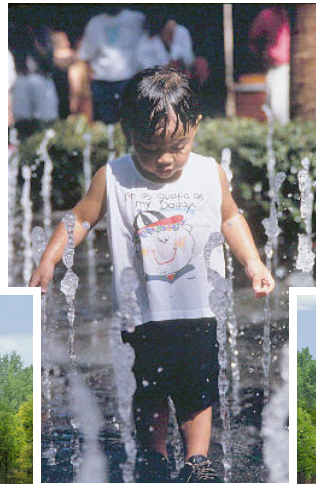
### Canopy Walk



*Education,  
Recreation  
and Discovery*



### Children's Watershed Experience

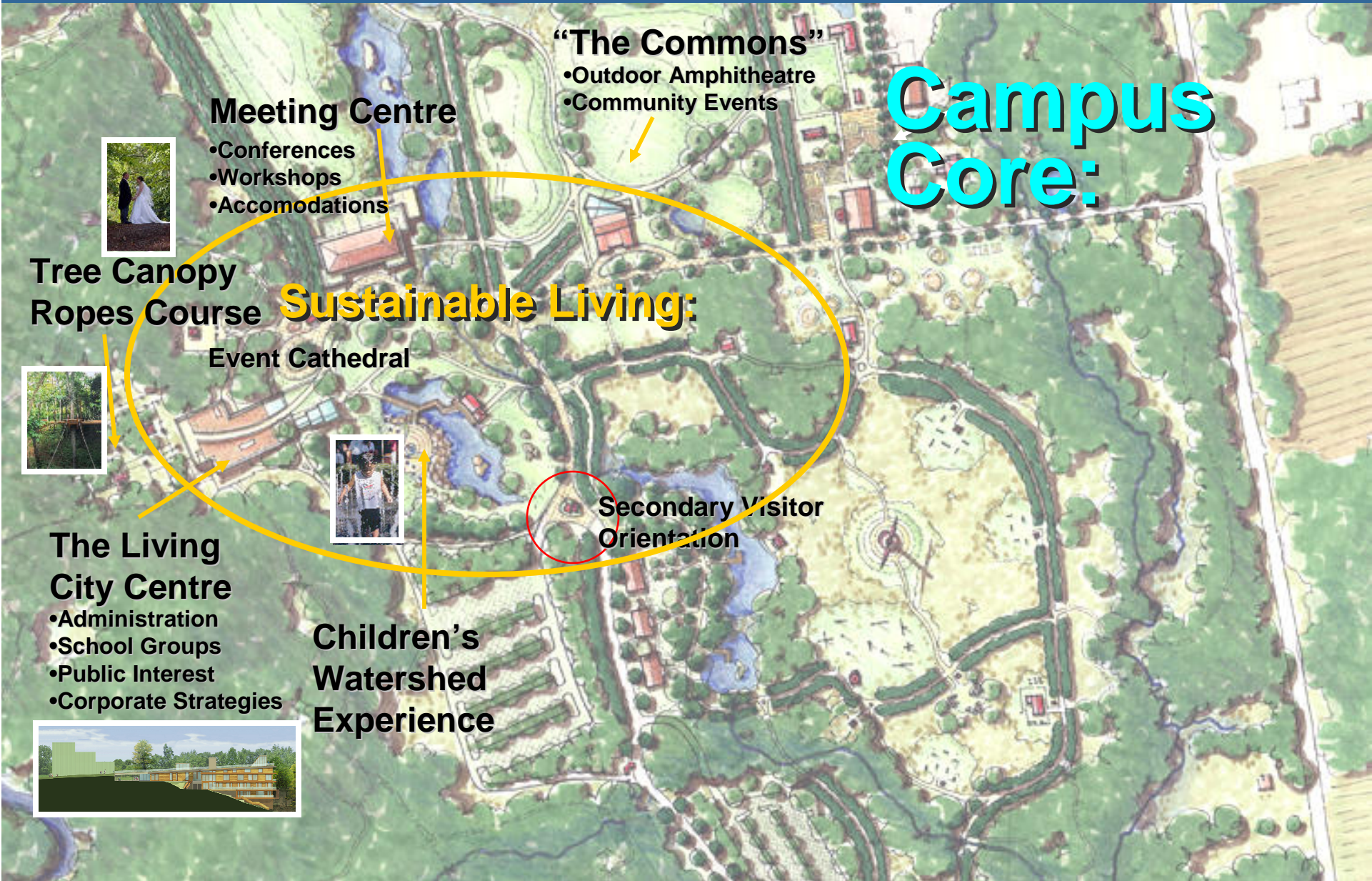


*Experience the  
Landscape*

### Event Cathedral



# The Central Campus - Sustainable Living & Energy Trail



**Campus Core:**

**"The Commons"**  
•Outdoor Amphitheatre  
•Community Events

**Meeting Centre**  
•Conferences  
•Workshops  
•Accommodations

**Sustainable Living:**

**Tree Canopy Ropes Course**

**Event Cathedral**

**Secondary Visitor Orientation**

**The Living City Centre**  
•Administration  
•School Groups  
•Public Interest  
•Corporate Strategies

**Children's Watershed Experience**

# Central Campus – Sustainable Living & Energy Trail

## *The Meeting Centre Green Building Design*



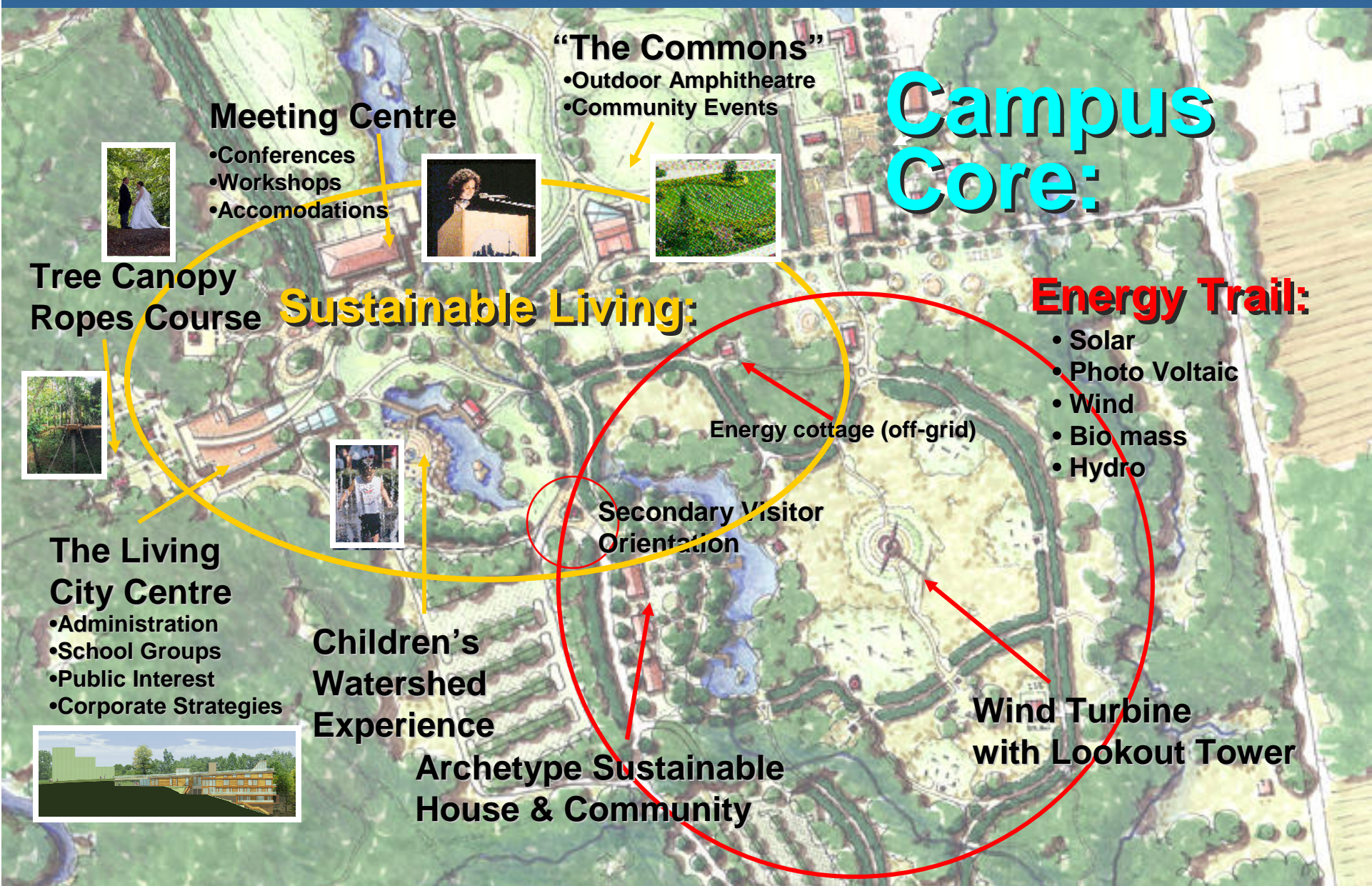
*Education,  
Conference,  
Event and  
Meeting  
facilities*

## *The Commons Outdoor Amphitheatre*



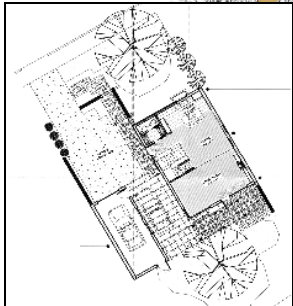
*Flexible Program  
and Event Space*

# The Central Campus - Sustainable Living & Energy Trail



# Central Campus – Sustainable Living & Energy Trail

## Archetype Sustainable House Project



**Energy Conservation**



## The Energy Trail

### Renewable Energy Demonstrations



**Wind Energy**

### Hydro



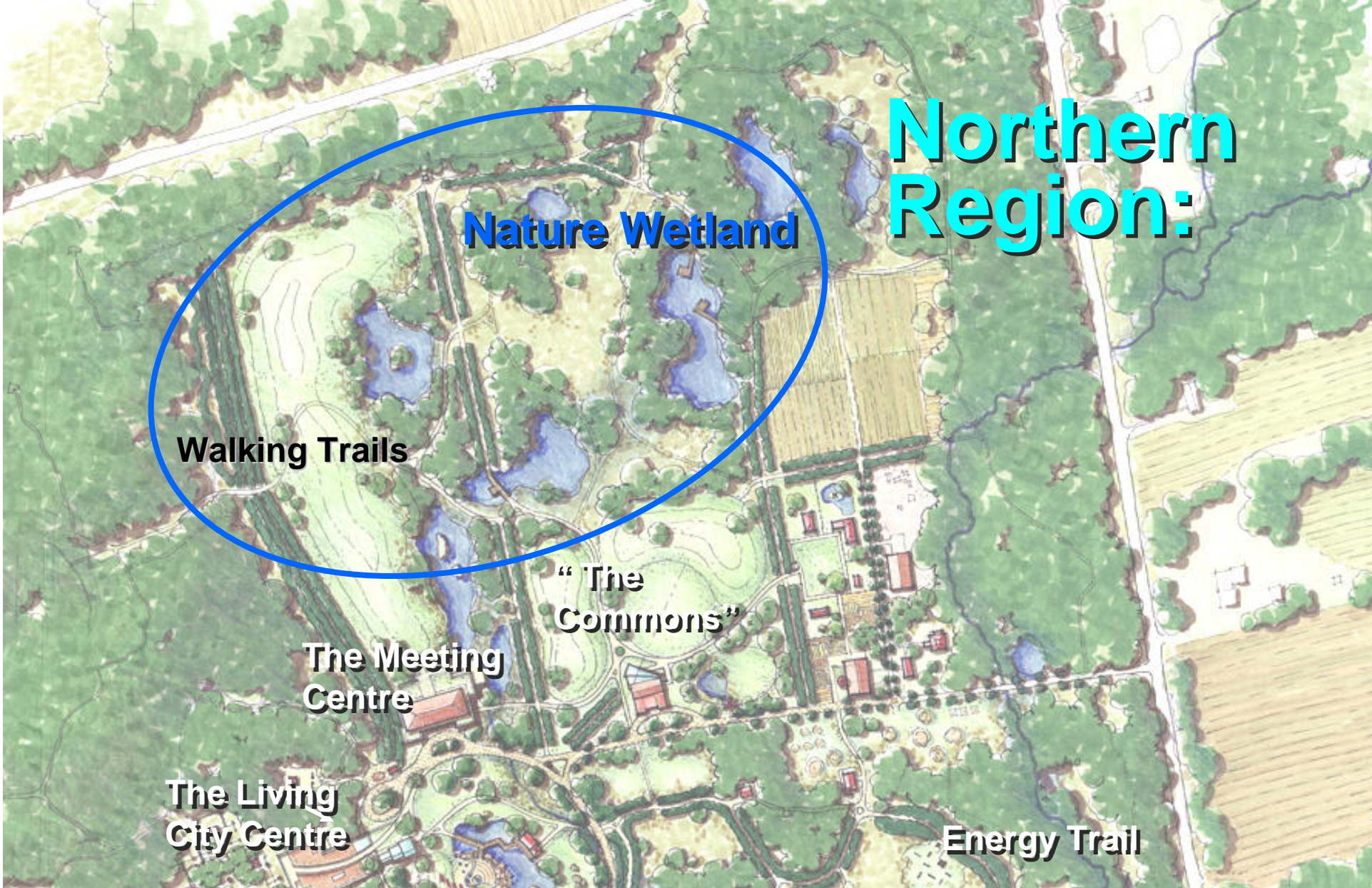
**Photovoltaics**



# The Central Campus - Sustainable Living & Energy Trail



# The North Campus – Urban Agriculture & Wetland



**Northern  
Region:**

**Nature Wetland**

**Walking Trails**

**The Meeting  
Centre**

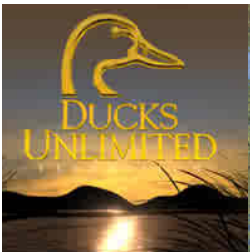
**“The  
Commons”**

**The Living  
City Centre**

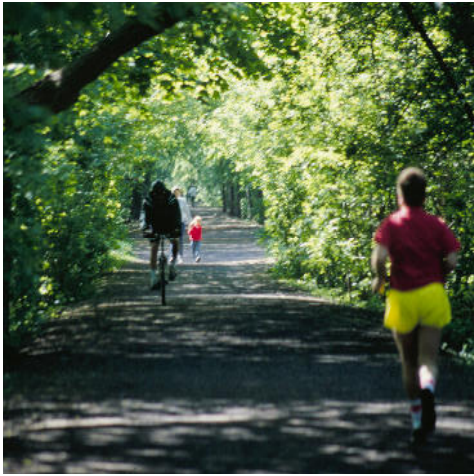
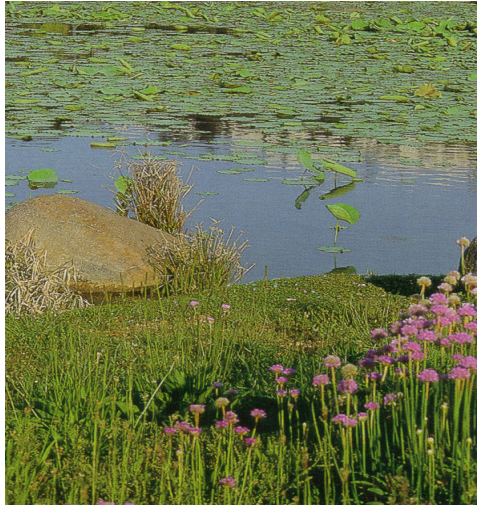
**Energy Trail**

# North Campus – Urban Agriculture & Wetland

## Nature Wetlands

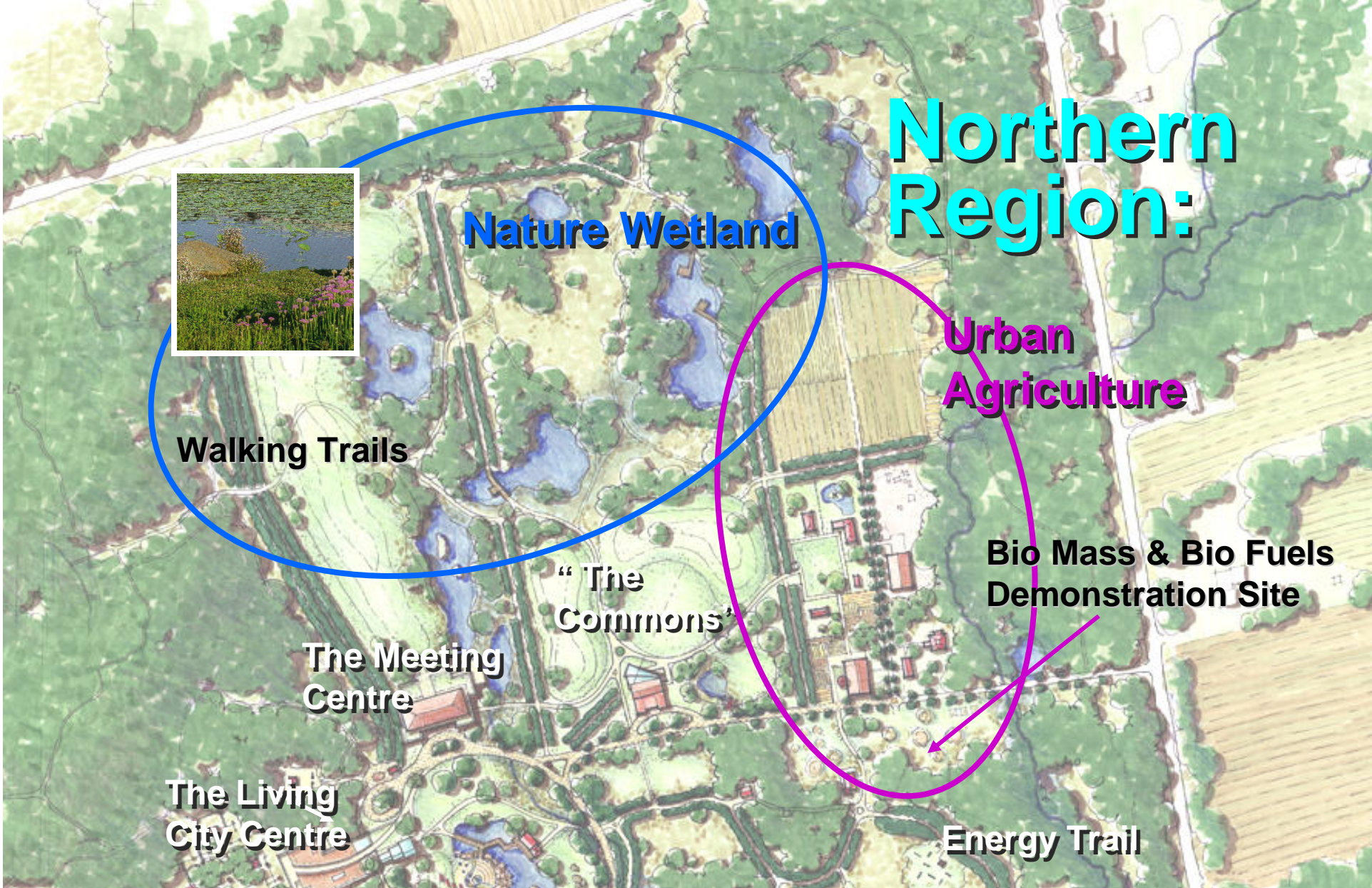


## Flora and Fauna, Wetland Ponds and Trails





# The North Campus – Urban Agriculture & Wetland



## Northern Region:

Nature Wetland

Urban Agriculture

Walking Trails

The Meeting Centre

The Living City Centre

“The Commons”

Bio Mass & Bio Fuels Demonstration Site

Energy Trail

# North Campus – Urban Agriculture & Wetland



**Community  
Based Events  
and Programs**



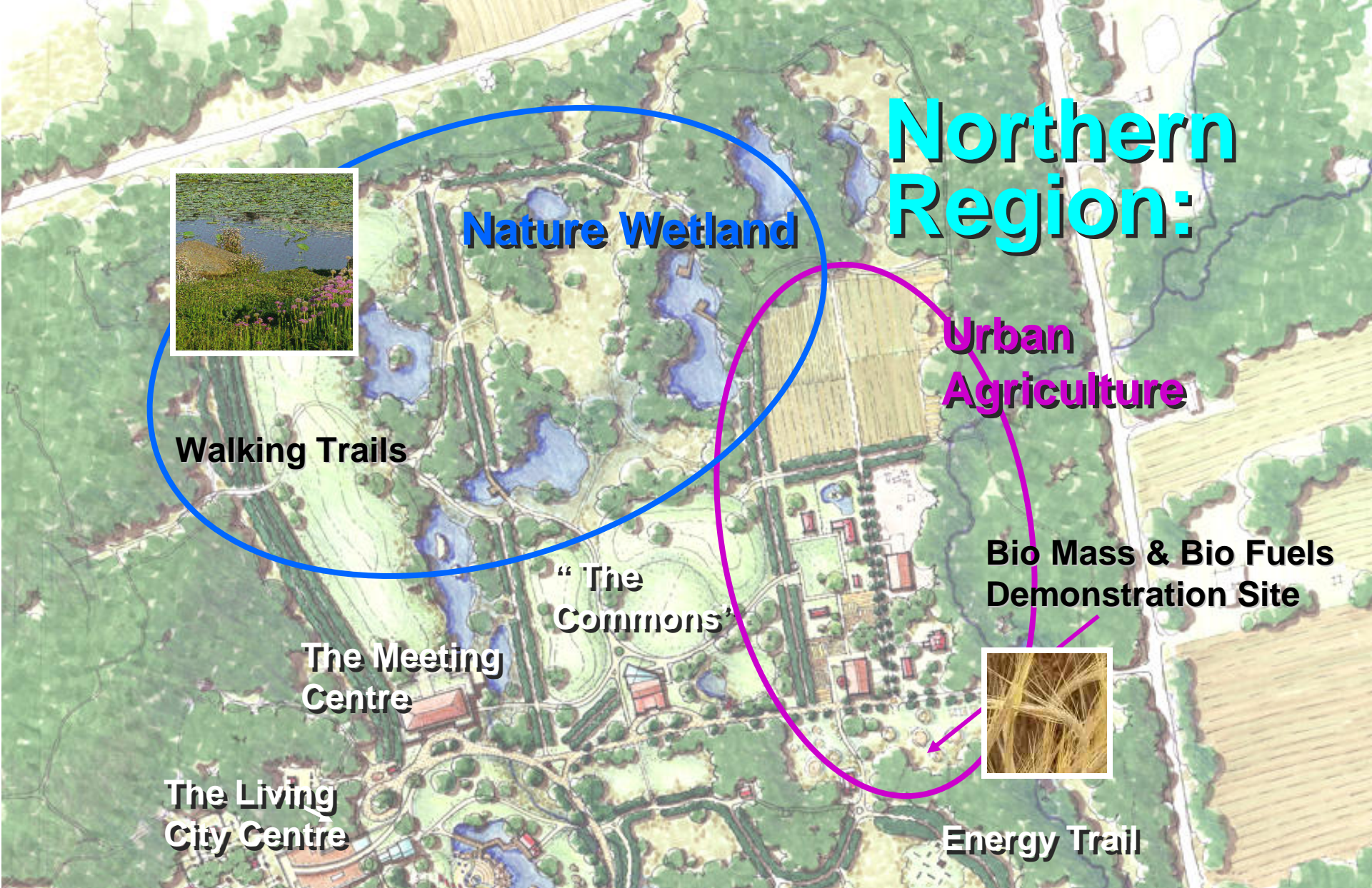
**Perennial Farming**



**Biological  
Recycling & Fuels**



# The North Campus – Urban Agriculture & Wetland



## Northern Region:

Nature Wetland

Urban Agriculture

Walking Trails

The Meeting Centre

The Living City Centre

“The Commons”

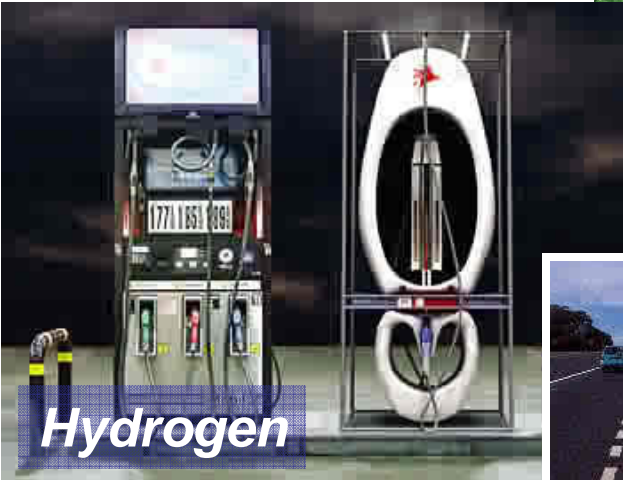
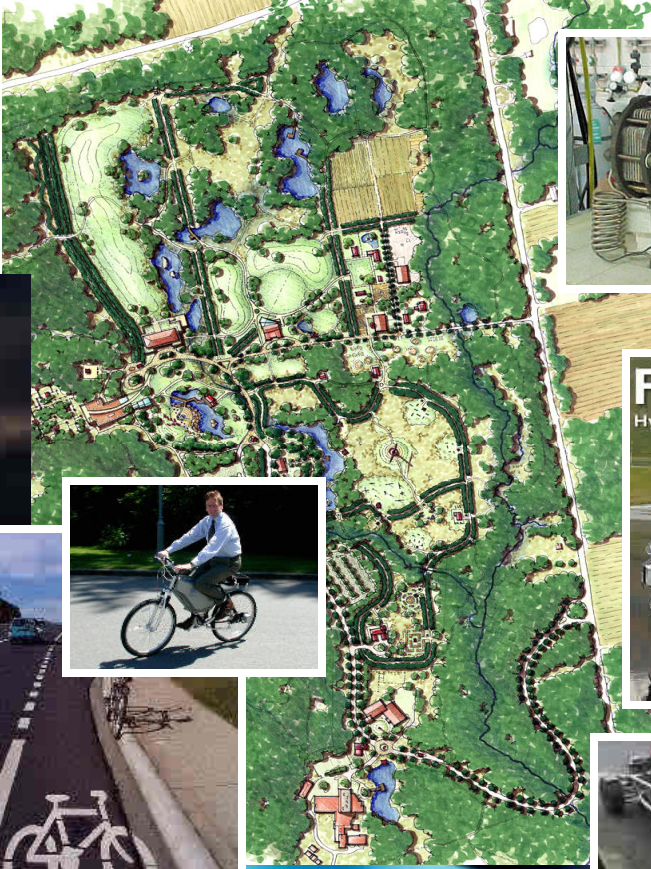
Bio Mass & Bio Fuels Demonstration Site



Energy Trail

# Campus Integrated Programming

## Transportation, Alternative Fuels & Energy



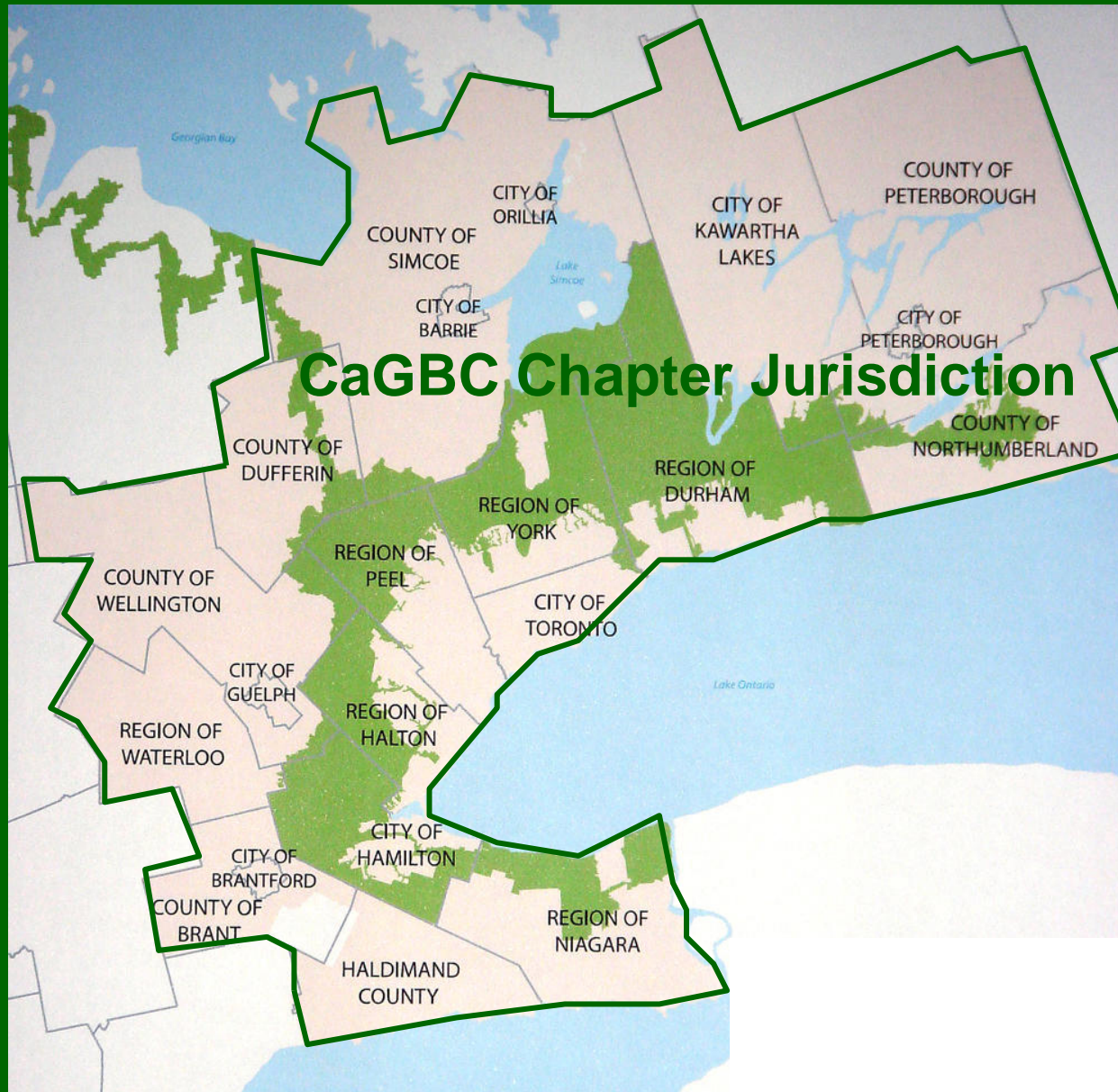
# Partnerships & Associations



# Canada Green Building Council Greater Toronto Chapter

[www.cagbc.org](http://www.cagbc.org)





## CaGBC Chapter Jurisdiction

- **Largest Chapter In Canada**
- **Established in 2003**
- **Facilitate the LEED rating system**
- **7 LEED Buildings Built to date in Ontario**
- **50 LEED projects under development!**



# Greater Toronto Chapter Initiatives for 2007

- Ontario Green Building Incentive Program
- Emerging Green Builders Scholarship Program
- LEED Exam Study Sessions –become a LEED accredited professional!
- Green Builders Awards Program and Gala Event
- 3<sup>rd</sup> Annual Toronto Regional Green Building Festival -Oct 2007

The Festival is a partnership project with:

- Sustainable Buildings Canada
- Toronto & Region Conservation
- Canadian Urban Institute





# Greater Toronto Chapter

- **Interested in Becoming a Member?**

**No fee for 2007!**

**Contact Melissa Ferrato:**

**[mferrato@trca.on.ca](mailto:mferrato@trca.on.ca)**

- **Next Chapter Meeting: Feb 28, all are welcome.**

**Space in limited, RSVP only (Melissa)**

**210 King St. E, Autodesk Presentation Centre**

