



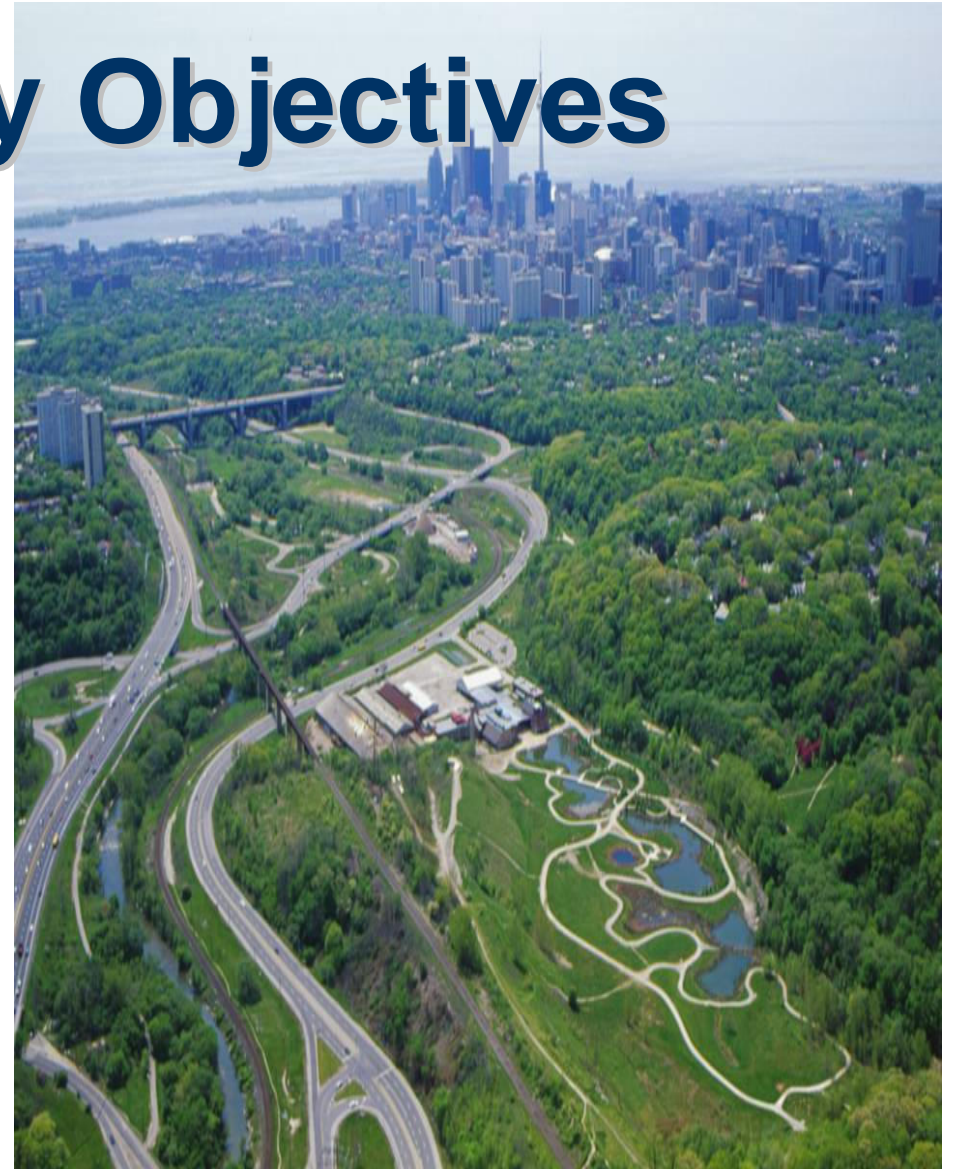
Terrestrial Natural Heritage System Strategy

February 23, 2007



The Living City Objectives

- **Healthy Rivers and Shorelines**
- **Regional Biodiversity**
- **Sustainable Communities**
- **Business Excellence**



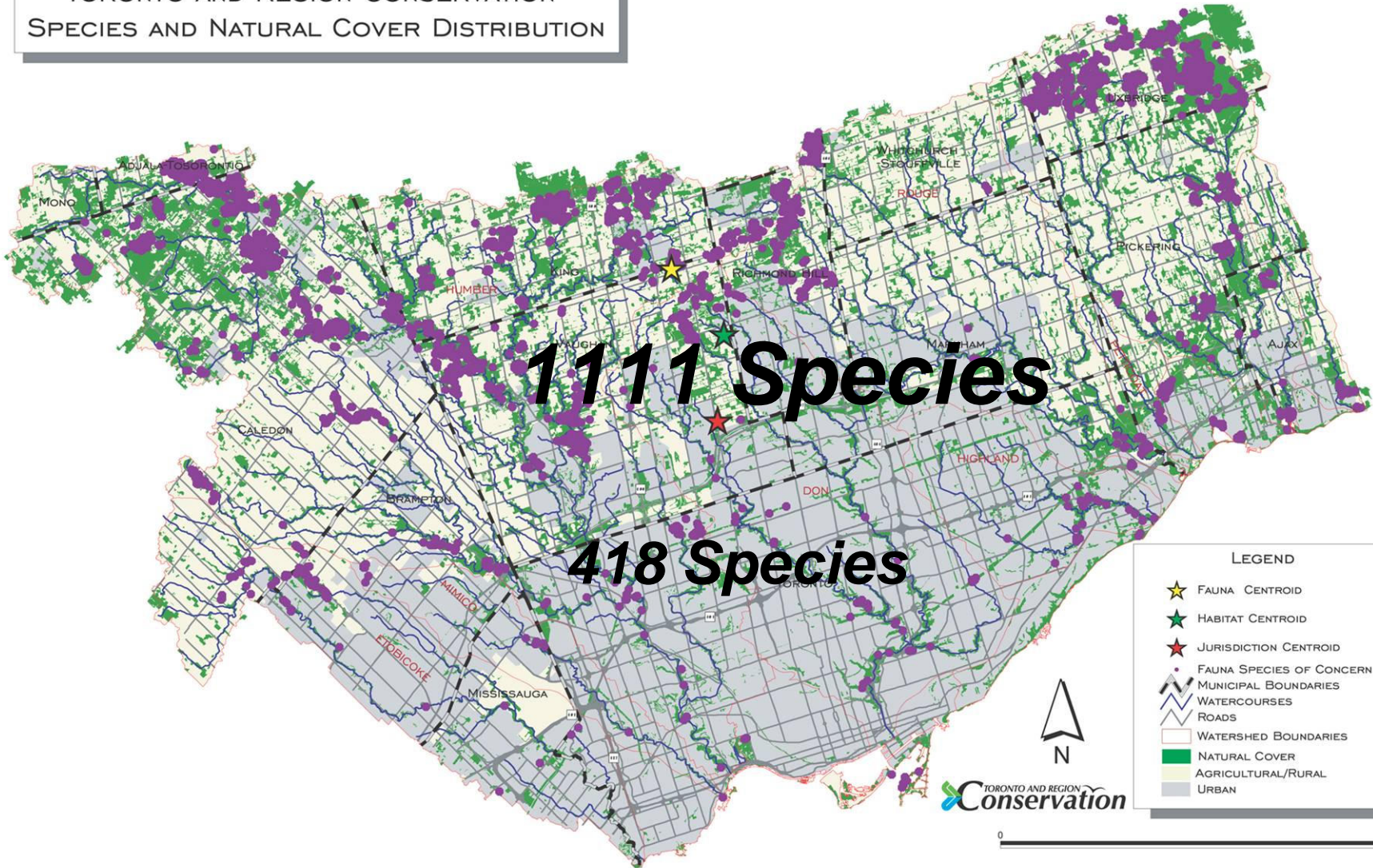


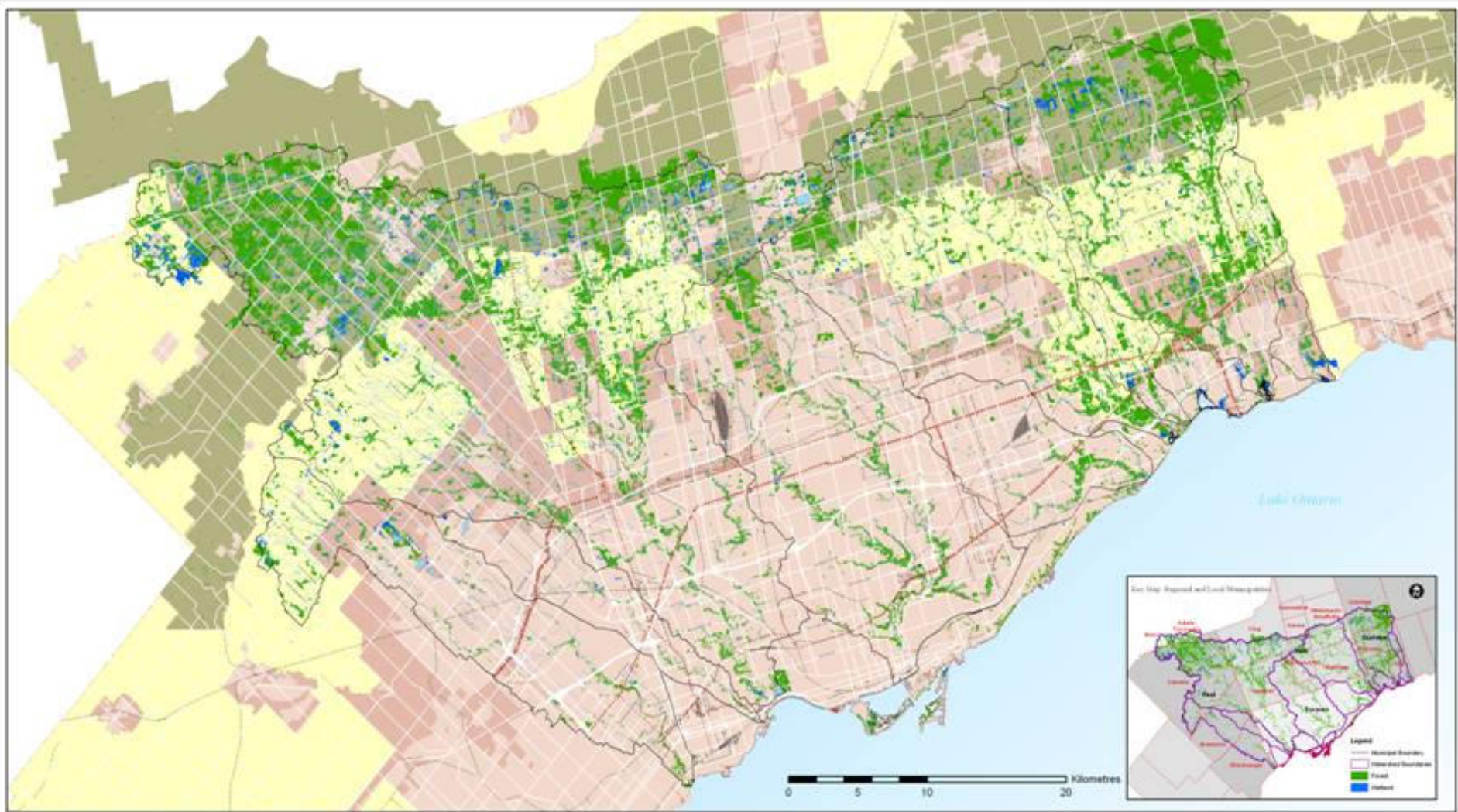
The Challenge

- Incremental loss of natural cover
- Incremental loss of terrestrial biodiversity
- Loss of quality of remaining habitat



TORONTO AND REGION CONSERVATION
SPECIES AND NATURAL COVER DISTRIBUTION





Date: April 14th, 2004
 Created By: T.R.C.A. Information Services/ Information Technologies



Legend

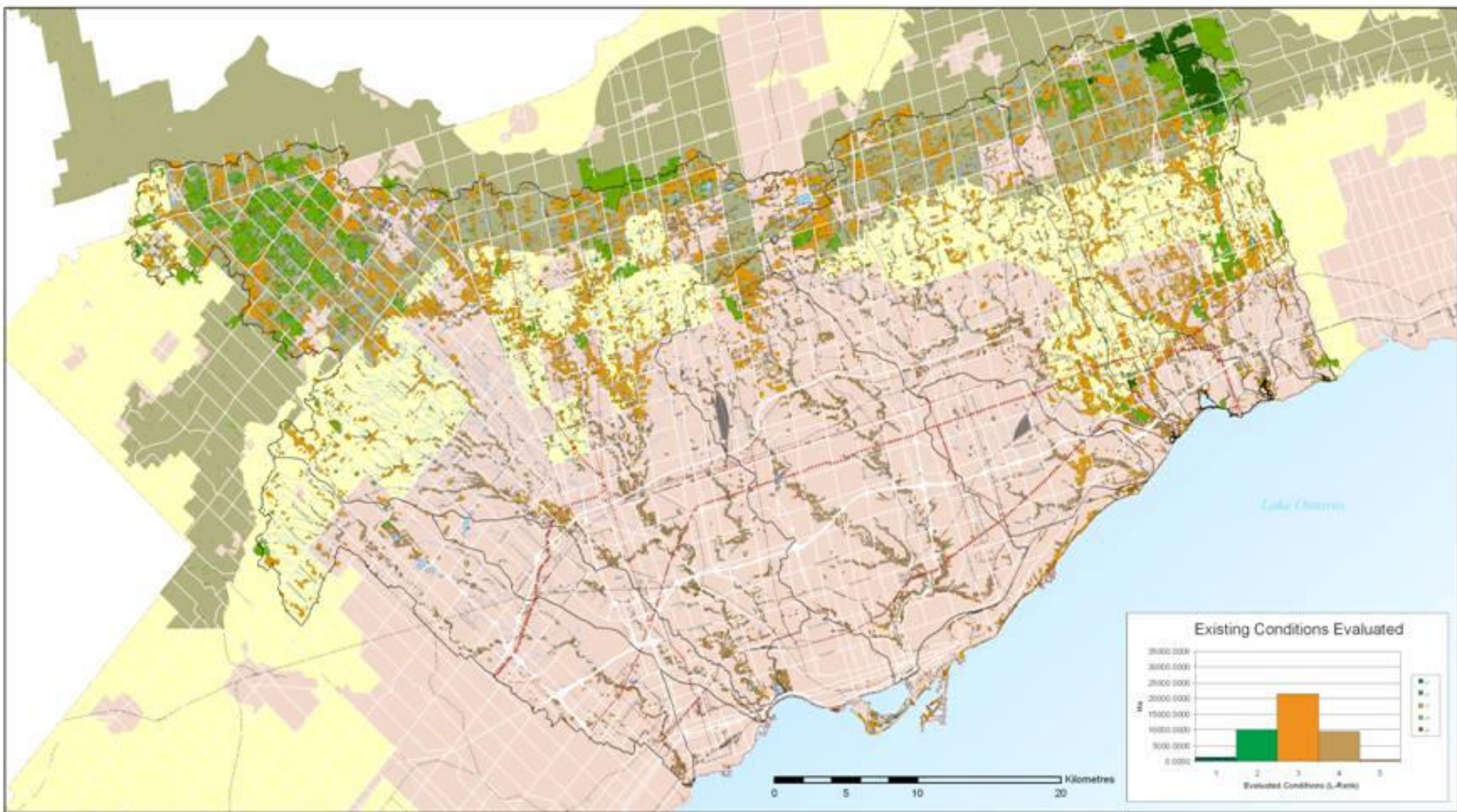
- Major Roads
- Hydro Corridors
- Railways
- Watercourses
- Municipal Boundary
- Watershed Boundary
- Ponds/Lakes

- Forest
- Wetland

TNHS Planning Zones

- Urban Zone
- Urbanizing Zone
- ORM Niagara Escarpment Zone
- Rural Zone

Terrestrial Natural Heritage Existing System
 TNH Map # 1.



Date: April 14th, 2004
 Created By: TRCA Information Services/ Information Technologies

Conservation
 Toronto and Region
 for The Living City

Legend

- Major Roads
- Hydro Corridors
- Railways
- Watercourses
- Municipal Boundary
- Watershed Boundary
- Ponds/Lakes

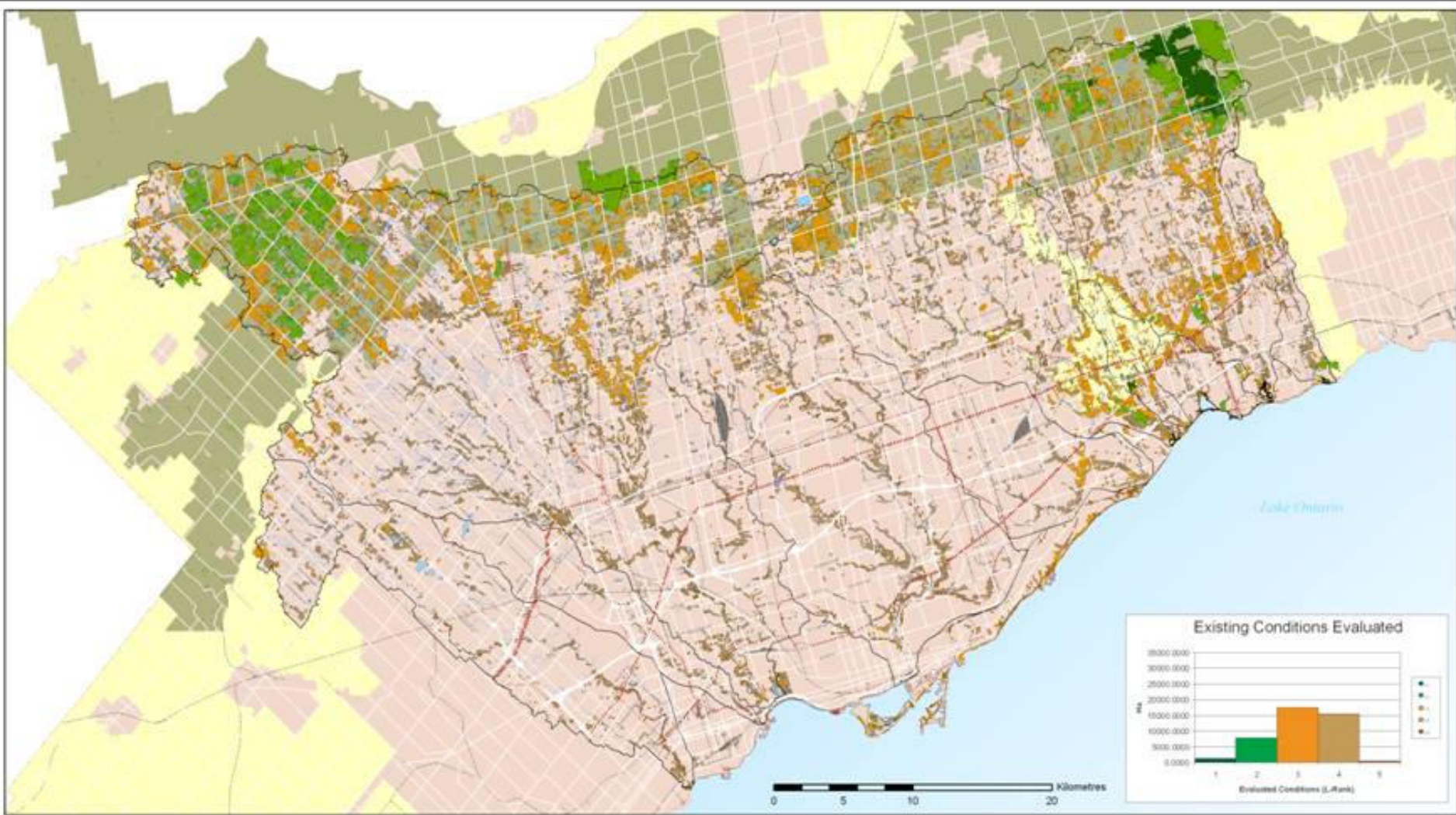
Existing System Evaluated

- 13 - Excellent
- 11-12 Good
- 9-10 Fair
- 6-8 Poor
- 0-5 Vary Poor

TNHS Planning Zones

- Urban & Urbanising Zone
- ORM/Niagara Escarpment Zone
- Rural Zone

Landscape Analysis
 Existing System
 TNH Map # 2.



Date: April 13th, 2004
 Created By: T.R.C.A. Information Services/ Information Technologies

Conservation
 for The Living City

Legend

- Major Roads
- Hydro Corridors
- Railways
- Watercourses
- Municipal Boundary
- Watershed Boundary
- Ponds/Lakes

Existing System Evaluated

- 11 - Excellent
- 11-12 Good
- 9-10 Fair
- 6-8 Poor
- 6-5 Very Poor

TNHS Planning Zones

- Urban & Urbanizing Zone
- ORM/Niagara Escarpment Zone
- Rural Zone

Landscape Analysis
 Existing System:
 Urban Expansion
 TNH Map # 2.b



Target Setting & System Design Model



What the Science Tells Us

To protect biodiversity we need to:

- Provide more natural cover
- Improve the distribution of natural cover throughout the watersheds
- Improve the quality of natural cover (size, shape and connectivity)





Criteria Employed in the Model

Ecologically-based Criteria

- Existing Habitat Condition
- Interior Forest
- Distance of Forest to Wetland
- Distance of Wetland to Forest
- Distance from urban areas
- Distance from natural areas
- Distance from roads
- Distance to water

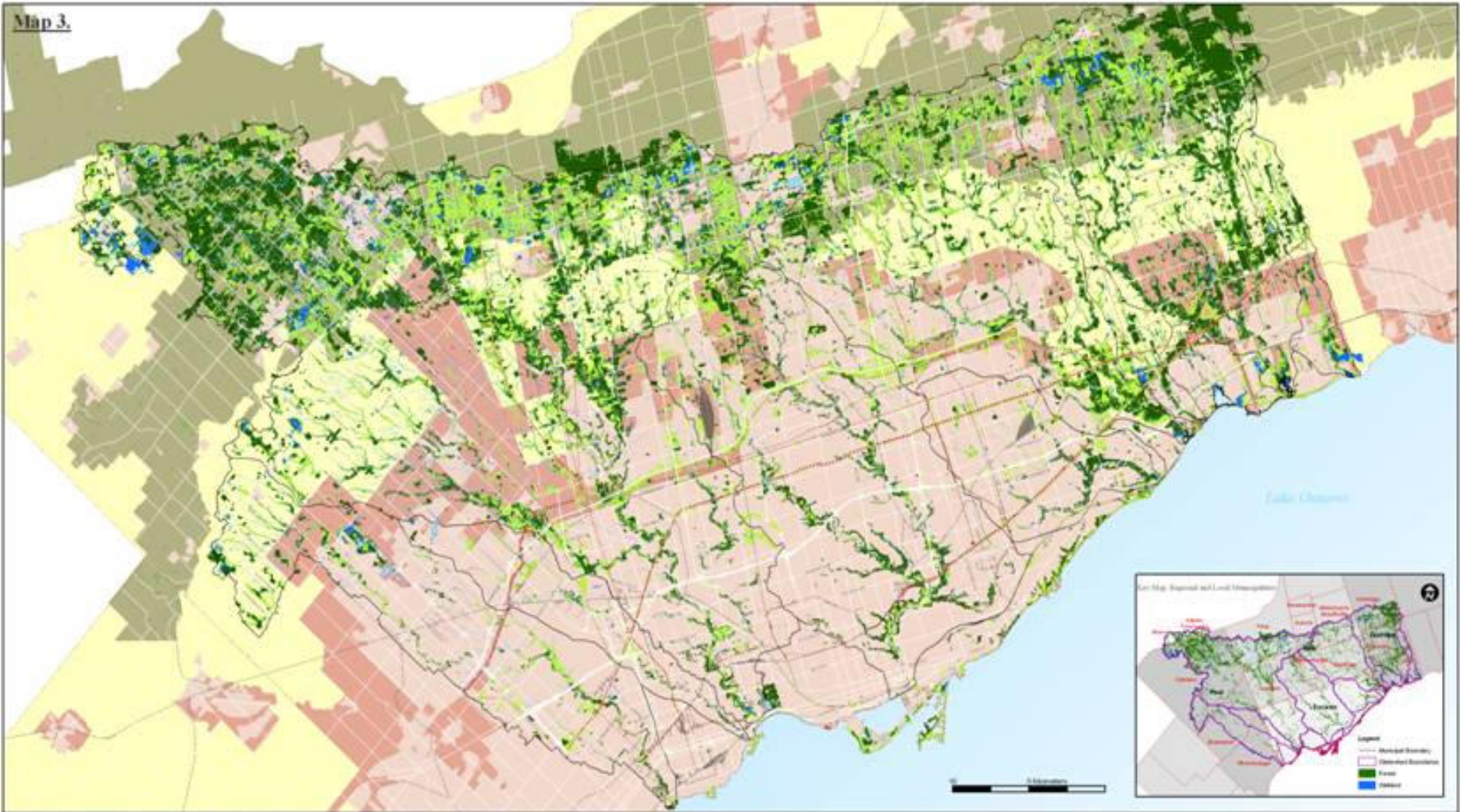
Planning/Ownership Criteria

- PSW
- ANSI
- ESA
- Regulated areas
- TRCA Property
- Oak Ridges Moraine
- Greenbelt
- Niagara Escarpment
- Rouge Park





Map 3.



Terrestrial Natural Heritage Target System

Legend

- Major Roads
- Hydro Corridors
- Railways
- Watercourses
- Municipal Boundary
- Watershed Boundary
- Ponds/Lakes

Target Terrestrial Natural Heritage System

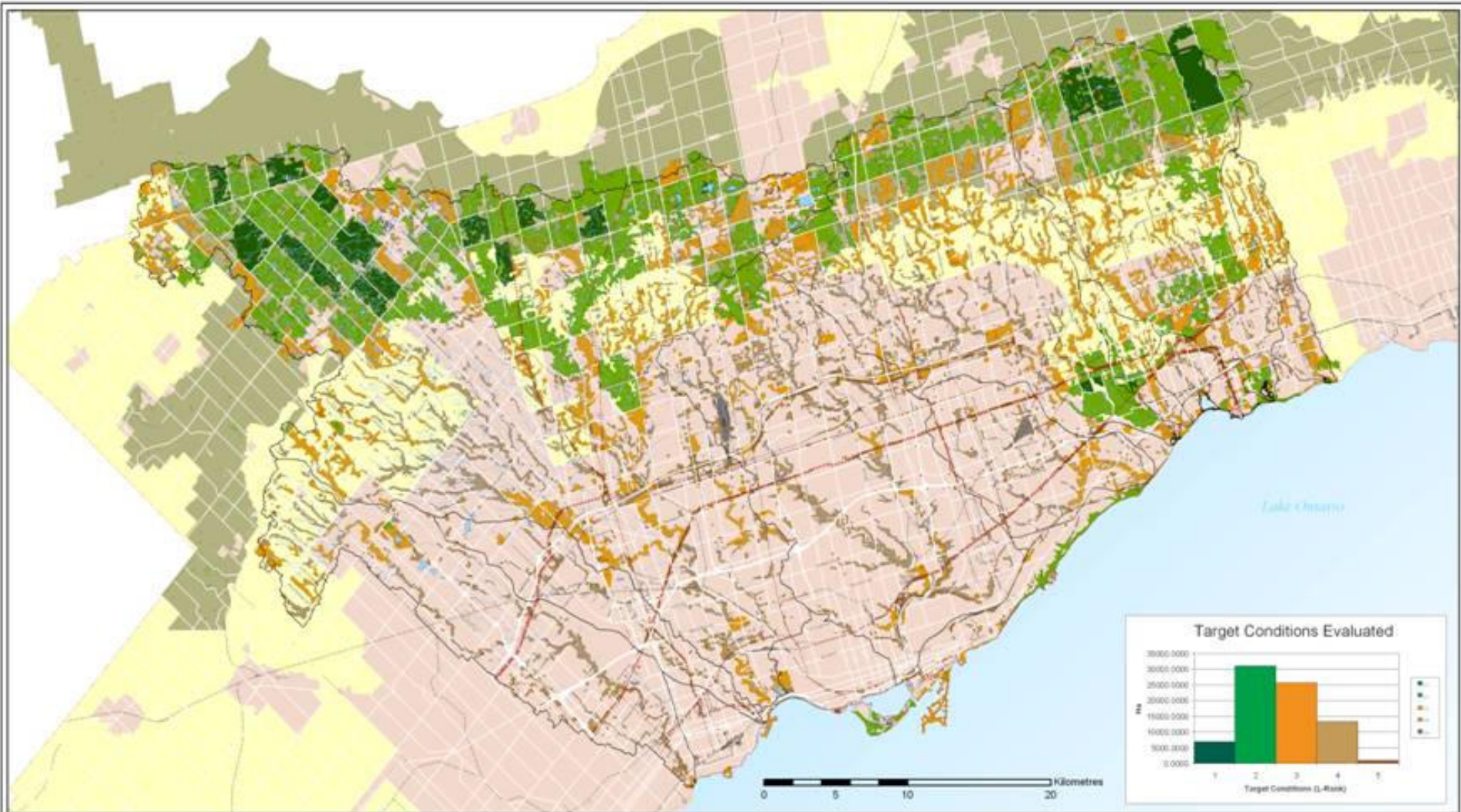
- Forest
- Wetland
- Potential Natural Cover

TNHS Planning Zones

- Urban Zone
- Urbanizing Zone
- OMS Niagara Escarpment Zone
- Rural Zone

Date: January 20th, 2004
 Created By: TRCA Information Services/ Information Technologies

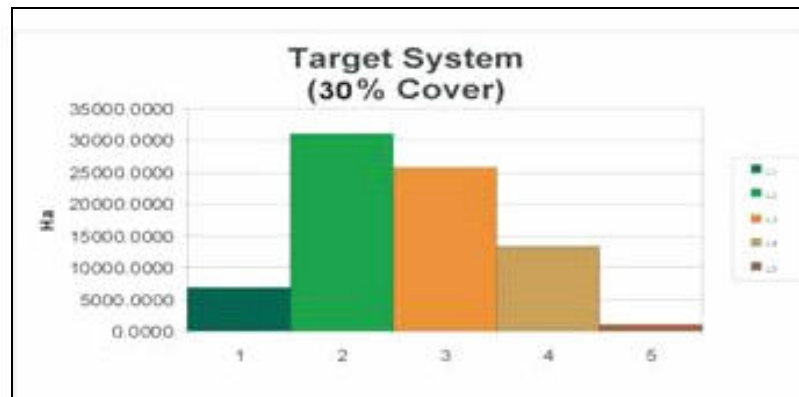
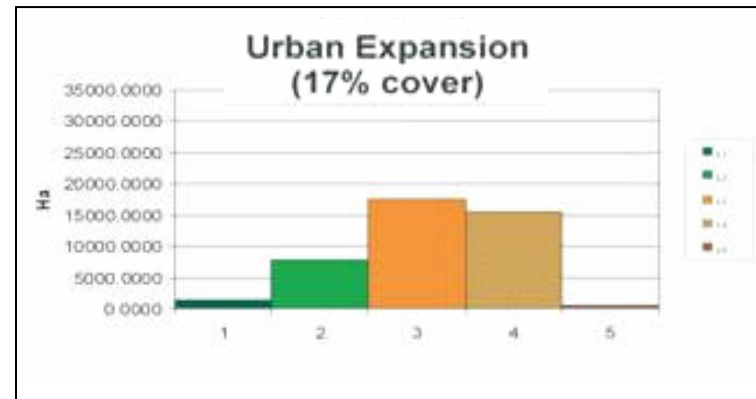
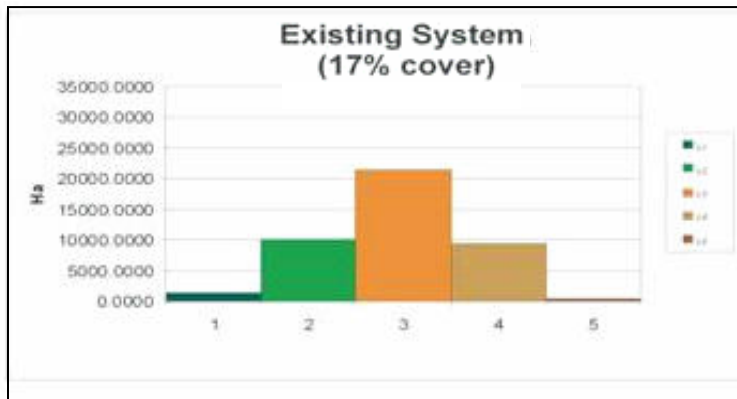




<p>Date Created By: April 14th, 2004 T.R.C.A. Information Services/ Information Technologies</p>	<p>Legend</p> <ul style="list-style-type: none"> Major Roads Hydro Corridors Railways Watercourses Municipal Boundary Watershed Boundary Ponds/Lakes 	<p>Target System Evaluated</p> <ul style="list-style-type: none"> 13 - Excellent 11-12 Good 9-10 Fair 6-8 Poor 0-5 Very Poor 	<p>TNHS Planning Zones</p> <ul style="list-style-type: none"> Urban & Urbanizing Zone OCM/Niagara Escarpment Zone Rural Zone 	<p style="text-align: center;">Landscape Analysis Target System TNH Map # 4</p>
--	---	---	---	---



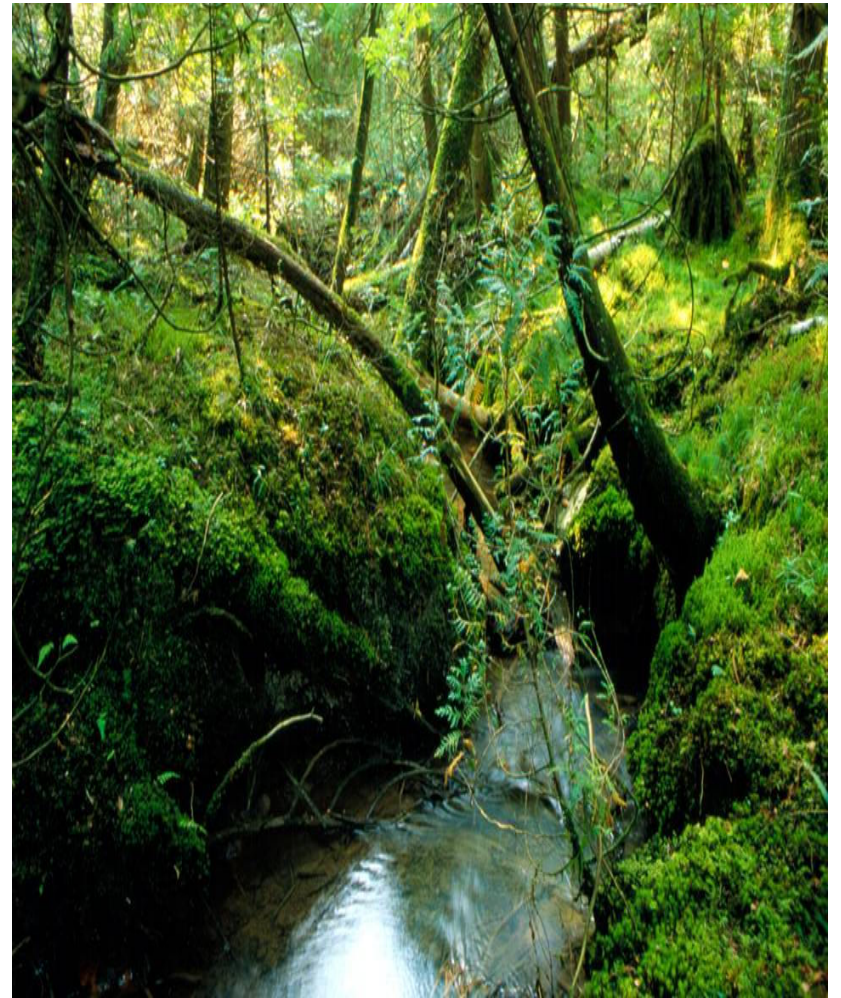
Landscape Analysis – Comparison (Forest and Wetlands)





A GRAND VISION IS REQUIRED

Its time to signal that sustainable communities are built on a foundation of environmental integrity that includes clean water, clean air, and diverse plant and animal communities





Thanks to our supporters

J.P. Bickell Foundation
City of Toronto
Environment Canada
Richard Ivey Foundation
McLaughlin Foundation
Region of Durham
Region of Peel
Region of York
Schad Foundation
Salamander Foundation
Unilever Canada





 **TORONTO AND REGION**
Conservation
for The Living City

**5 Shoreham Drive, Toronto, ON
M3N 1S4
(416) 661-6600**

<http://www.trca.on.ca>

Dena Lewis, Manager, Terrestrial and Aquatic Ecology, dlewis@trca.on.ca – ext 5225

Lionel Normand, Terrestrial Biologist, lnormand@trca.on.ca – ext 5327

Jason Tam, Geomatics Analyst, jtam@trca.on.ca – ext 5340

